



HOUSE OF LOGISTICS AND MOBILITY

# HOLM-FORUM

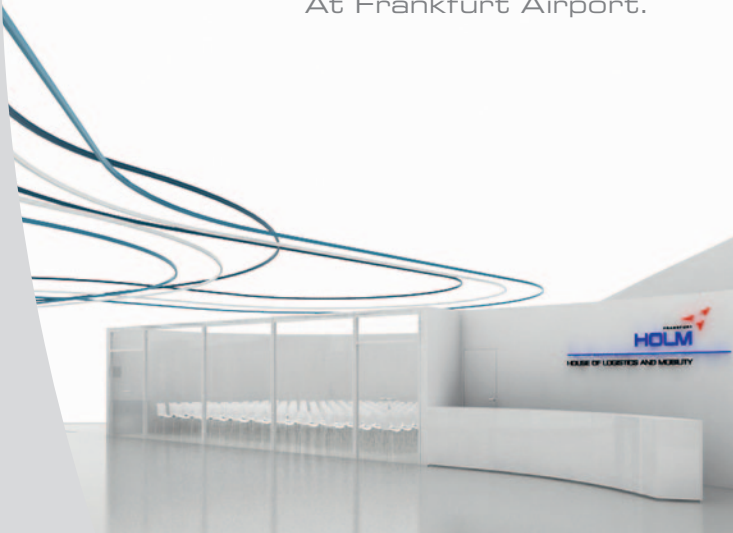
**Experience the Future**

Understand complexity.

Network know-how.

Deliver expertise.

At Frankfurt Airport.



Moving the future forward.

## The House of Logistics and Mobility (HOLM) - a platform with a strong future

The House of Logistics and Mobility (HOLM) is a neutral platform for interdisciplinary and applications-oriented project work, research as well as training and advanced instruction relating to logistics, mobility and associated disciplines. HOLM brings together different specialist fields of expertise under a single roof and its work is driven by intense collaboration between the worlds of business, politics and society. At the Gateway Gardens complex at Frankfurt's Rhine-Main Airport, the HOLM building will open in 2013, providing up to 20,000 square meters of space as the interdisciplinary platform for research, training and networking. Here, colleges, companies and other institutions will be able to lock into outstanding know-how and forge new alliances.

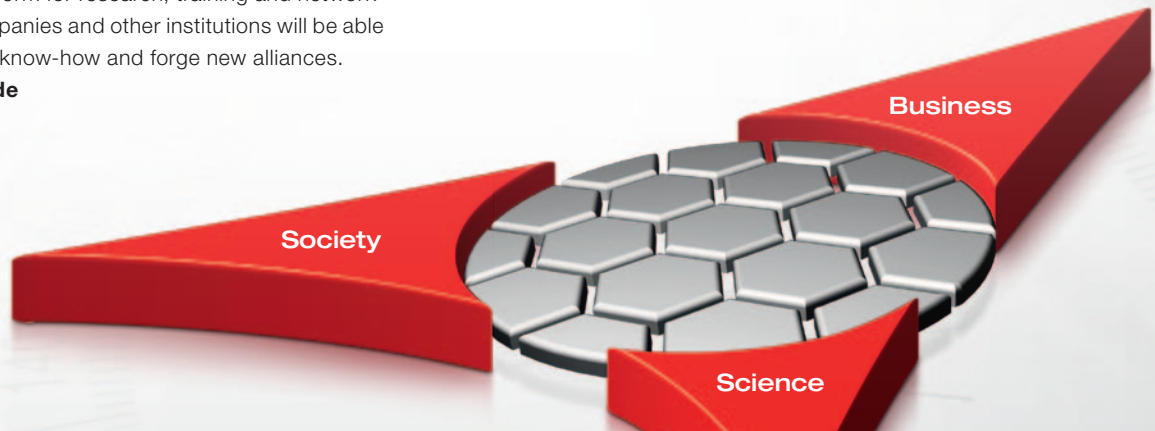
[www.frankfurt-holm.de](http://www.frankfurt-holm.de)

Experience the future.

## The HOLM-Forum - showcasing logistics and mobility

The HOLM-Forum acts as a showcase for both HOLM themes and projects and over-arching future issues relating to logistics and mobility. Here, corporations from the automobile, aerospace, commercial, transport, freight and IT sectors join up with economists, social and political scientists, and engineers to present the results of their interdisciplinary approaches to the future and to highlight their innovative ideas for trailblazing solutions and concepts. Meaning the HOLM-Forum is a central hub for everyone committed to safe, sustainable and eco-viable logistics and mobility.

[www.holm-forum.de](http://www.holm-forum.de)



### Realization of the HOLM-Forum:

Architecture	<b>TULP</b>
Interior fittings	<b>mac</b> die messeexperten
Graphic design	echo))) kommunikation im raum
Construction approvals and monitoring	<b>Grontmij</b>
Fire protection concept	<b>BPK</b>

**Concept & project management:** Dr. Jack Thoms, HOLM GmbH

### We would like to thank the following for their support in developing the concept:

**Dr. Hans-Jörg Czech**, Founding Director City Museum, City of Wiesbaden Cultural Bureau

**Dr. Torben Giese**, Research Associate, City of Wiesbaden Cultural Bureau

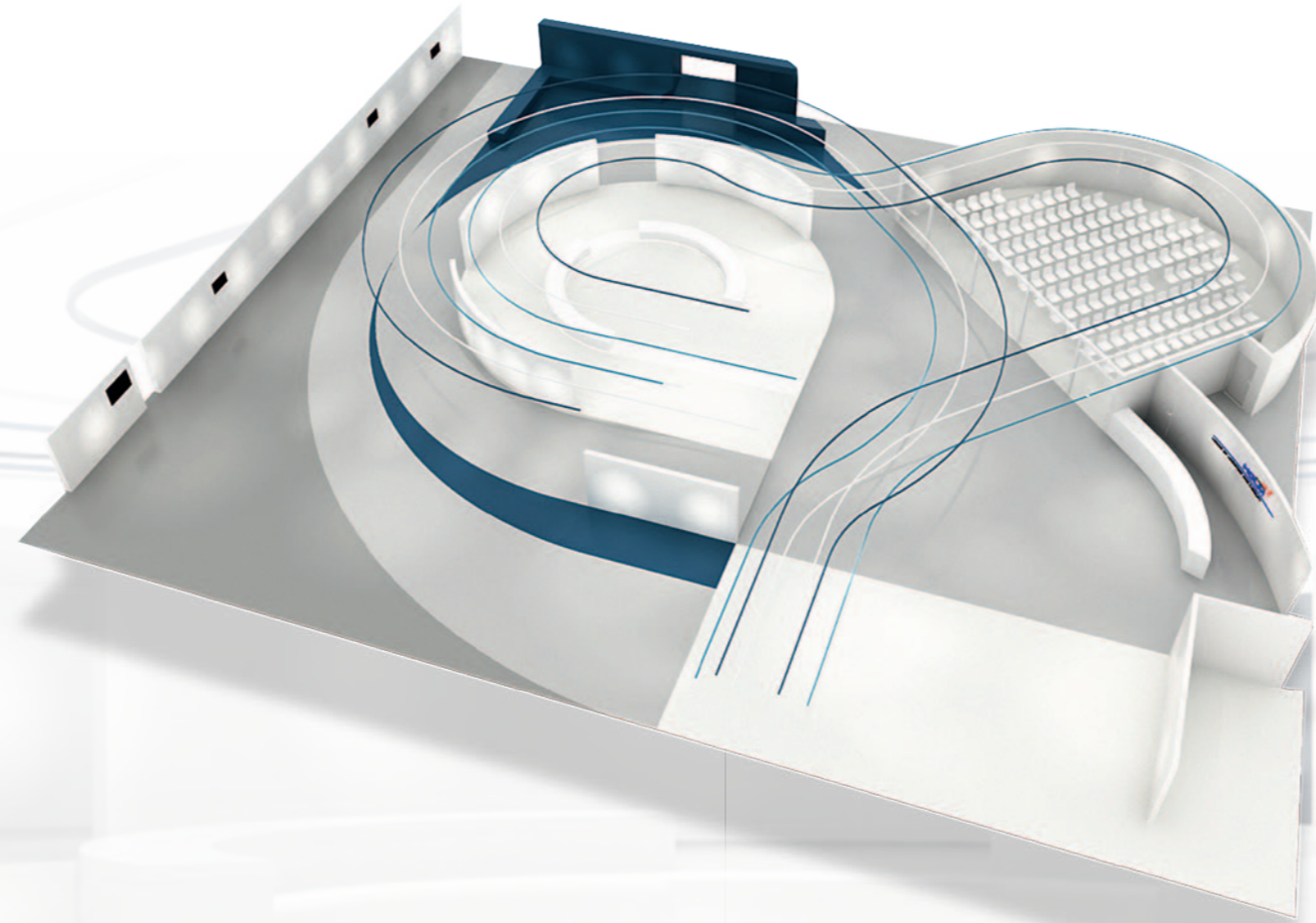
**Prof. Georg-Christof Bertsch**, HfG Offenbach, owner of Bertsch. Brand Consultants, Frankfurt

Excitingly told.

Looking Back Looking Forward  
**Forward**

**The HOLM-Forum ...**

- casts a glance back over the history of developments in logistics and mobility
- offers an insight into the linkages in our networked global business world
- Gives the outlook on the key issues of the future, such as sustainability, demographic change, safety and security, and how these impact on passenger and freight transport
- Showcases innovative solutions and highlights the prowess of the Rhine-Main Region, the State of Hessen and Germany in the fields of logistics and mobility
- Acts as the platform for new ideas and visionary concepts, and offers opportunities for involvement and interaction
- Functions as a meeting point and interesting venue for citizens, companies, academics and international guests in the Rhine-Main Region



Expertly presented.

**An appealing exhibition and events venue**

With its outstanding location and impressive architecture, the HOLM-Forum serves as an ideal platform for events relating to logistics and mobility.

Be it meetings, conventions, exhibitions or receptions, the HOLM-Forum is the ideal meeting point for companies, colleges, associations, clubs and their international guests and clientele.

Are you a HOLM member?

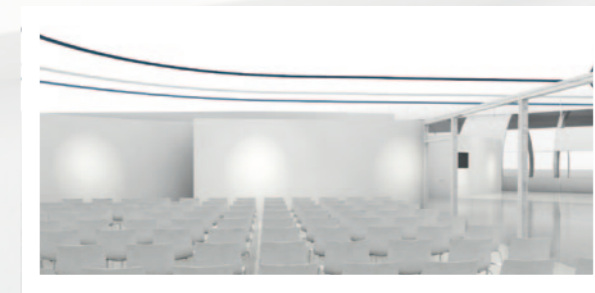
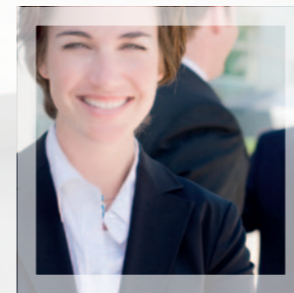
Then you can make use of the HOLM-Forum:

- Meeting room
- Events room for a max. of 150 persons
- The presentation area for your projects and innovations
- The exhibition area for your most exciting and eye-catching items
- The entire Forum as a unique venue for your special event, complete with bar and lounge

Moreover, HOLM invites its partners and members to create joint presentations on current focal topics in the dedicated exhibition area.

**For details and rental terms and conditions, simply visit [www.holm-forum.de](http://www.holm-forum.de)**

**EXPERIENCE THE FUTURE.**



**HOLM-FORUM**  
**Experience the Future**

Patrons of HOLM and  
the HOLM-Forum



**BOMBARDIER**



Deutsche Post DHL

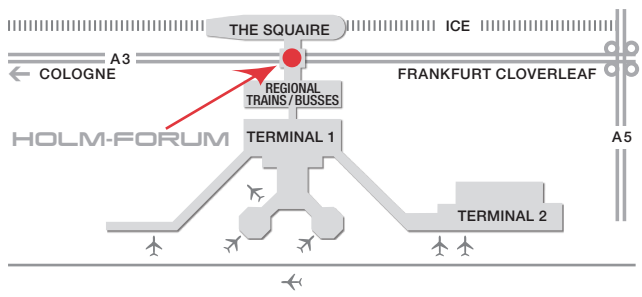


Ideally positioned.

## At Frankfurt's Rhine-Main Airport

The HOLM-Forum is extremely easy to reach for all visitors and guests. It is located between the Long-Distance Railway Station / The Squire and Terminal 1, directly over the A 3 interstate. In other words, it has ideal transport links, be it international airlines, the high-speed rail network, or regional trains and busses. At the same time, it is positioned at the heart of the flow of European passenger and freight transport, as here

- ø 23,000 passengers on average use the airport's Long-Distance Railway Station each day
- ø 300,000 vehicles on average cross the interstate cloverleaf and
- ø 145,000 passengers on average use Frankfurt Airport each day



## Contact:

House of Logistics & Mobility (HOLM) GmbH  
Jean-Gardner-Batten-Straße 8, Building 612  
Gateway Gardens  
D-60549 Frankfurt/Main

Tel + 49 (0) 69 24 75 217-10, Fax + 49 (0) 69 24 75 217-88  
info@frankfurt-holm.de www.frankfurt-holm.de